

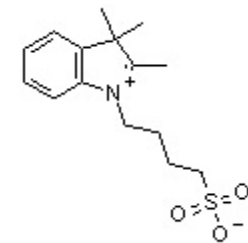
<sup>1</sup>H

8.05  
8.04  
8.03  
8.02  
7.85  
7.84  
7.83  
7.82  
7.63  
7.62  
7.61  
7.61  
7.61  
7.60  
7.60

4.51  
4.49  
4.46

2.85  
2.53  
2.50  
2.48  
2.01  
1.98  
1.96  
1.93  
1.91  
1.78  
1.76  
1.73  
1.71  
1.69  
1.53

<sup>1</sup>H NMR (300 MHz, DMSO-*d*<sub>6</sub>) δ 8.10 – 7.99 (m, 1H), 7.90 – 7.78 (m, 1H),  
7.68 – 7.56 (m, 2H), 4.49 (t, *J* = 7.7 Hz, 2H), 2.85 (s, 3H), 2.60 – 2.43 (m,  
3H), 1.96 (q, 2H), 1.74 (q, *J* = 7.5 Hz, 2H), 1.53 (s, 6H).



B (m)  
7.84  
A (m)  
8.03  
C (m)  
7.61

D (t)  
4.49

H (s)  
2.85

E (m)  
2.49

F (q)  
1.96

G (q)  
1.74

I (s)  
1.53

1.00  
1.02  
1.99

2.02

2.97  
2.69

2.01  
2.12  
5.88

11.5 11.0 10.5 10.0 9.5 9.0 8.5 8.0 7.5 7.0 6.5 6.0 5.5 5.0 4.5 4.0 3.5 3.0 2.5 2.0 1.5 1.0 0.5 0.0 -0.5  
f1 (ppm)