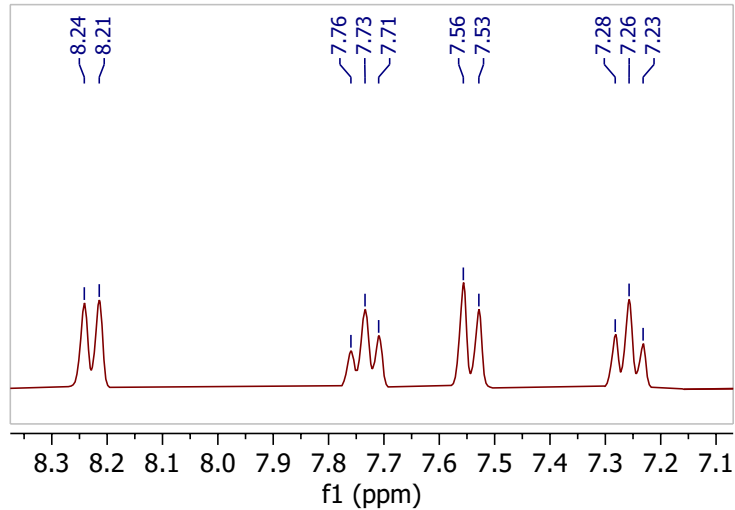


^1H NMR (300 MHz,) δ 11.78 (s, 1H), 8.23 (d, $J = 8.1$ Hz, 2H), 7.73 (t, $J = 7.5$ Hz, 2H), 7.54 (d, $J = 8.4$ Hz, 2H), 7.26 (t, $J = 7.6$ Hz, 2H).

— 11.78

8.24
8.21
7.76
7.73
7.71
7.56
7.53
7.28
7.26
7.23



E (s)
11.78

D (d)
8.23

B (d)
7.54

A (t)
7.26

C (t)
7.73

0.90

2.13

2.14

2.12

2.16

5 14 13 12 11 10 9 8 7 6 5 4 3 2 1 0 -1

f1 (ppm)