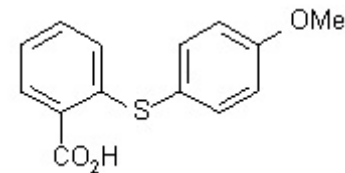


13C - 19862-91-0

—167.80 —160.80 —143.95 —137.89 —132.81 —131.42 —127.13 —126.37 —124.57 —122.41 —116.15

—55.77



$^{13}\text{C}$  NMR (101 MHz, DMSO)  $\delta$  167.80, 160.80, 143.95, 137.89, 132.81, 131.42, 127.13, 126.37, 124.57, 122.41, 116.15, 55.77.

